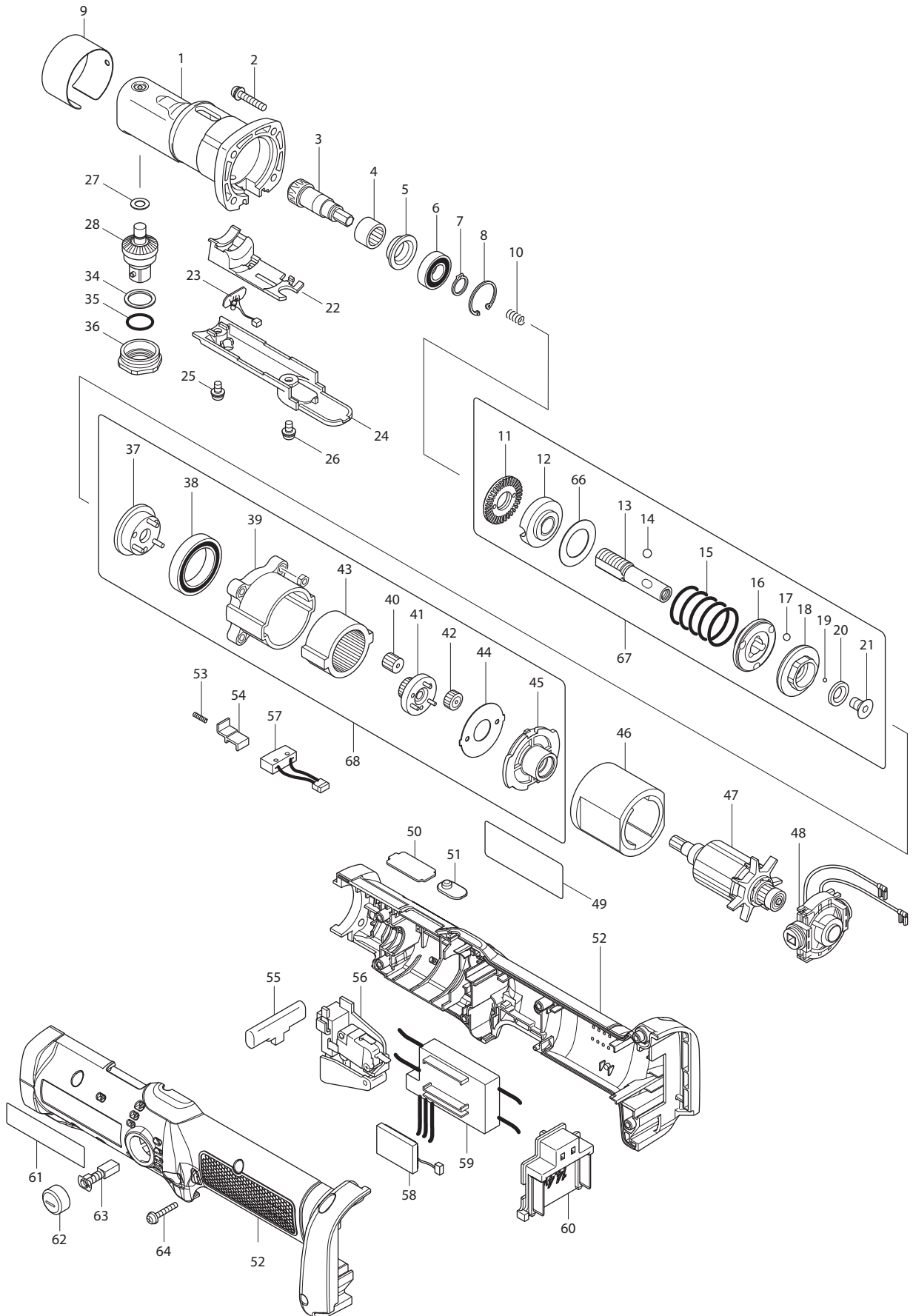




08- 2015
DFL082FZ
14.4V ANGLE WRENCH



PARTS LIST

Item No	Type	Part No	Description	Qty	Unit
001	2	144082-3	* ANGLE HEAD COMPLETE	1	PC.
002		265145-3	+ PAN HEAD SCREW M4X22	4	PC.
003		227469-5	SPIRAL BEVEL GEAR 9	1	PC.
004		212123-4	NEEDLE BEARING 1210	1	PC.
005		345281-2	SPACER	1	PC.
006		210057-5	BALL BEARING 6900LLB	1	PC.
007		961026-6	RETAINING RING S-10	1	PC.
008		962112-6	RETAINING RING R-22	1	PC.
009		345442-4	RING 38J	1	PC.
010	1	233019-6	COMPRESSION SPRING 5	1	PC.
010	2	232657-1	COMPRESSION SPRING 4	1	PC.
011		324834-0	LOCK NUT M12	1	PC.
012		158408-3	ADJUST RING COMPLETE	1	PC.
013		324296-2	SPINDLE	1	PC.
014		216018-3	STEEL BALL 5.0	3	PC.
015		233358-4	COMPRESSION SPRING 19C	1	PC.
016		223146-7	CAM D	1	PC.
017		216024-8	STEEL BALL 4	3	PC.
018		223143-3	CAM C	1	PC.
019		216019-1	STEEL BALL 3	13	PC.
020		267247-1	FLAT WASHER 7	1	PC.
021		266305-0	TORX C.S HEAD SCREW M5X10	1	PC.
022		418011-5	LIGHT HOLDER	1	PC.
023		631513-6	LED CIRCUIT	1	PC.
024		418005-0	LIGHT COVER	1	PC.
025		265171-2	PAN HEAD SCREW M4X8	1	PC.
026		265171-2	PAN HEAD SCREW M4X8	1	PC.
027		253726-5	FLAT WASHER 6	1	PC.
028		154725-9	SPINDLE A COMPLETE	1	PC.
028	INC.	233081-1	COMPRESSION SPRING 3	1	PC.
028	INC.	256436-3	PIN 3-5	1	PC.
028	INC.	322640-7	CAP	1	PC.
034		253842-3	FLAT WASHER 14	1	PC.
035		213162-7	O RING 14	1	PC.
036	3	285030-4	* BEARING RETAINER 14-23	1	PC.
037		153443-6	CARRIER COMPLETE A	1	PC.
038		211375-4	BALL BEARING 6805LLB	1	PC.
039		418004-2	GEAR CASE	1	PC.

Item No	Type	Part No	Description	Qty	Unit
040		227050-2	SPUR GEAR 13	3	PC.
041		153684-4	SPUR GEAR 20 COMPLETE C	1	PC.
042		227104-5	SPUR GEAR 15	3	PC.
043		227048-9	INTERNAL GEAR 47	1	PC.
044		267774-8	LOCK WASHER	1	PC.
045		418003-4	MOTOR BRACKET	1	PC.
046		638183-2	YOKE UNIT	1	PC.
047		619316-8	ARMATURE	1	PC.
048		687138-4	ENDBELL COMPLETE	1	PC.
049		851B61-3	NAME PLATE F/DFL082F	1	
050		345282-0	PLATE A, 2 - 8Nm	1	PC.
051	2	457975-8	LENS	1	PC.
052		187487-4	HOUSING SET	1	SET
052	INC.		Item No. 61		
053		233025-1	COMPRESSION SPRING 2	1	PC.
054		418002-6	SWITCH LEVER	1	PC.
055		417511-2	F/R CHANGE LEVER	1	PC.
056		650536-5	SWITCH C3Z-5-01 SINGLE W/O LOCK REV	1	PC.
057	1	638184-0	SWITCH UNIT	1	PC.
057	2	632T52-9	SWITCH UNIT	1	PC.
058		631514-4	BUZZER CIRCUIT	1	PC.
059	2	632M46-2	CONTROLLER UNIT	1	PC.
060		643828-9	TERMINAL	1	PC.
061		819284-7	MAKITA LOGO LABEL	1	PC.
062		643933-2	BRUSH HOLDER CAP	2	PC.
063		195020-8	CARBON BRUSH CB-434 2PC/SET W/ ORIGIN	1	SET
064		265095-2	PAN HEAD SCREW M3X20	6	PC.
066		267276-4	FLAT WASHER 18	1	PC.
067		125395-1	CLUTCH ASS'Y H	1	PC.
067	INC.		Item No. 11-21,66		
068		125231-1	GEAR ASS'Y E	1	PC.
068	INC.		Item No. 37-45		
A01		765027-4	TORQUE ADJUST TOOL	1	PC.
A03		-----	COLOUR CODED PLASTIC PROTECTORS & IDENTIFIERS		
A04		-----	14.4V LI-ION BATTERY		
A05		-----	BATTERY CHARGER		
A06		-----	LI-ION BATTERY ACCESSORIES		
A07		195621-2	* ANTI KICK BACK HEAD SET (SPECIAL ORDER ITEM)	1	PC.
A08		453091-4	* PROTECTOR BLUE F/ANTI-KICK BACK HEAD SET	1	PC.

Item No	Type	Part No	Description	Qty	Unit
A08		453092-2	* PROTECTOR RED F/ANTI-KICK BACK HEAD SET	1	PC.
A08		453093-0	* PROTECTOR YELLOW F/ANTI-KICK BACK HEAD SET	1	PC.
A08		453094-8	* PROTECTOR CLEAR F/ANTI-KICK BACK HEAD SET	1	PC.
E01		802J50-9	CAUTION LABEL (W/NO BATTERY NO.)	1	PC.

SERVICE CHANGES: DFL082F

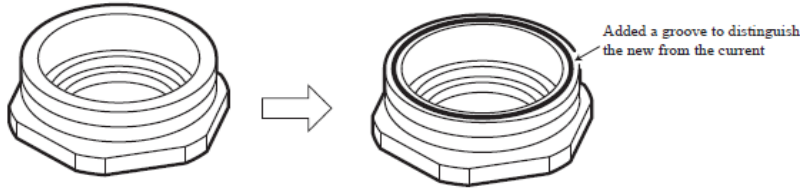
1. Changes on Angle Head Complete & Bearing Retainer

(TI#B3611)

(TI#B5568)

Item No.	Description	Type 1	Type 2	Type 3
1	Angle Head Complete	154494-2	144082-3	
36	Bearing Retainer 14-23	285707-1	285026-5(N/A)	285030-4

Above parts are completely interchangeable as a set.



2. Special Order Items

Item No.	Description	PN
A07	ANTI KICK BACK HEAD SET	195621-2
A08	PROTECTOR BLUE F/ANTI-KICK BACK HEAD SET	453091-4
	PROTECTOR RED F/ANTI-KICK BACK HEAD SET	453092-2
	PROTECTOR YELLOW F/ANTI-KICK BACK HEAD SET	453093-0
	PROTECTOR CLEAR F/ANTI-KICK BACK HEAD SET	453094-8